

STEP-BY-STEP GUIDE

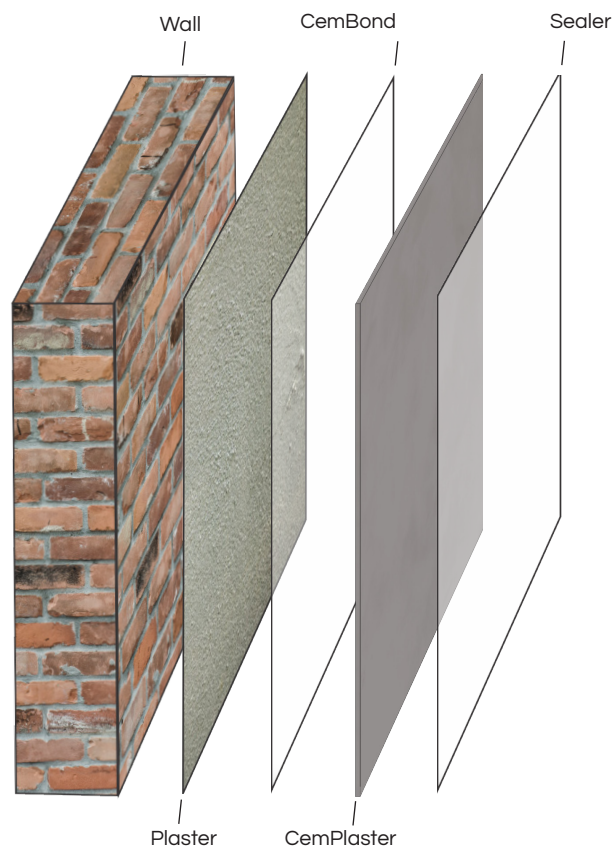
CemPlaster



What do you need:

🔧 Tools & Consumables	📄 Products	📈 Difficulty
<ul style="list-style-type: none">• Mechanical Mixer• Sponge Float• Steel Trowel / Notched Trowel• Roller / Brush• Mist Sprayer• Nail & Masking Tape (Optional)	<ul style="list-style-type: none">• CemBond• CemPlaster• Sealer	★ ★ ★ ★ ☆

The system:



Manufacturers of Distinctive Decorative Coatings
0860 CEMCRETE | info@cemcrete.co.za | www.cemcrete.co.za

STEP-BY-STEP GUIDE

CemPlaster



Surfaces should be hard (no crumbling or cracking, and have good compressive strength). They should also be clean, free of contaminants, or laitance of any sort which may impair bond. Organic growths should be removed by brushing with a solution of 1 volume household bleach (sodium hyper-chlorite) solution and 3 volumes water.



Allow 12 hours to kill spores then remove with a wire brush and water. Allow the surface to dry completely before priming. Plaster to be primed using two coats of CemBond solution (diluted 1 part CemBond with 5 parts water).



Mix 3 volumes CemPlaster with 1 volume clean water. The CemPlaster mix should have virtually no slump (less than 5mm), but be workable.



Allow final coat of CemBond to dry prior to applying the CemPlaster with a notched or steel trowel.



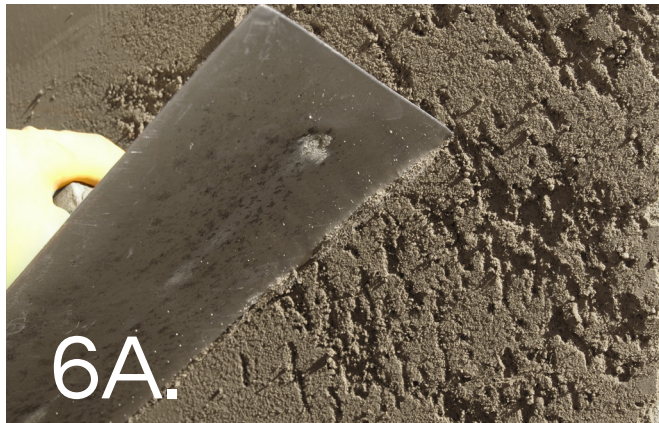
Final thickness should not exceed 5mm. Use a 3mm or 5mm thickness gauge to check application thickness.



Level with a sponge float and finish using one of the following methods:

STEP-BY-STEP GUIDE

CemPlaster



Scratched Finish (5mm) | Scratch the surface when biscuit-hard using the edge of a steel float to pull out the larger aggregate, leaving a rough "scratched" finish.



Smooth Finish (3mm) | Finish using a steel float, being careful not to "burn" by over-trowelling.



Sponged Finish (3mm) | Finish with a damp sponge.



Printed Finish (5mm) | Use rubber print mats for various finishes. Can be used with Coloured Release Agent.



Off Shutter Finish (5mm) | Finish using a steel trowel.

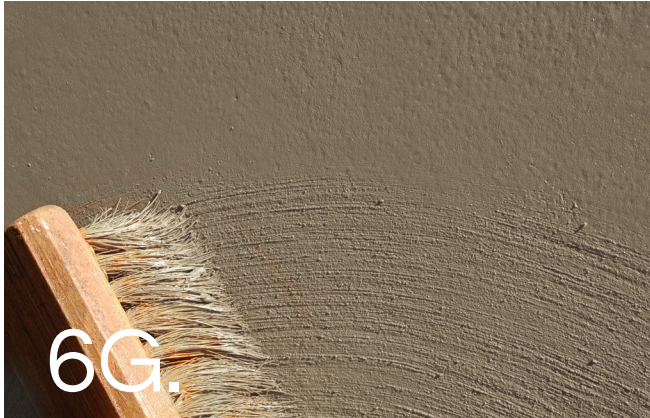


Wood Float Finish (3mm) | Finish using a wood float.

STEP-BY-STEP GUIDE

CemPlaster

Page 4 of 4



Brushed Finish (3mm) | Brush using a large, slightly wet paintbrush while the plaster is biscuit-hard.



All plaster work to be cured by mist spraying with clean water 3 times on the day following the day of application. Moisture must be less than 5% before sealing. Cemcrete manufacture a wide range of sealers designed for various purposes. Please contact your local representative for the best solution to meet your needs.