




STEP-BY-STEP GUIDE

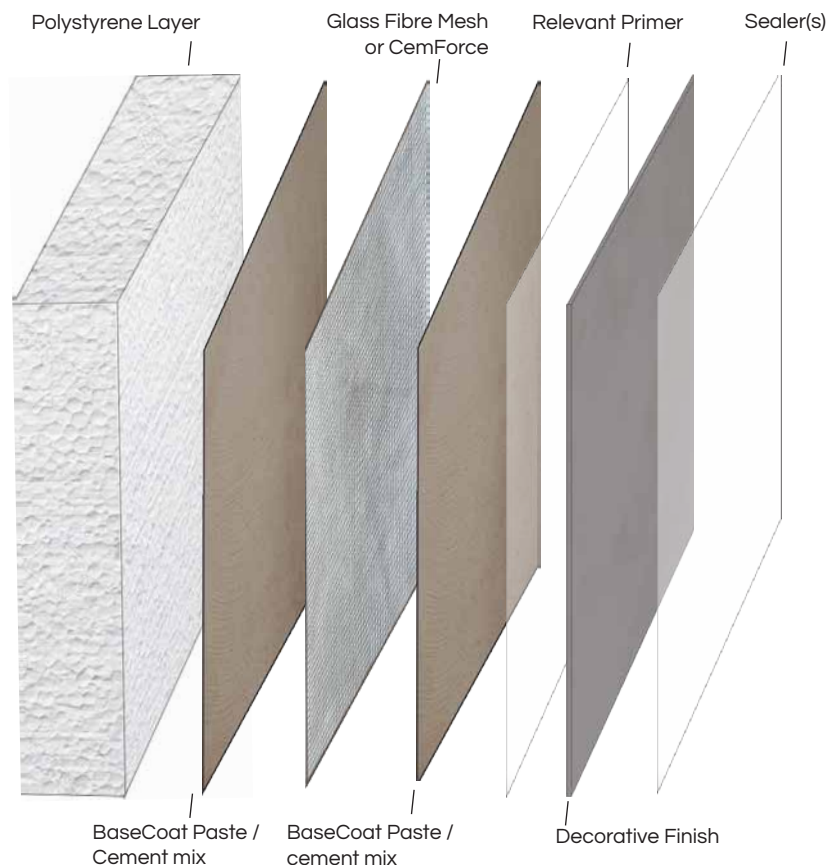
BaseCoat Paste over polystyrene



What do you need:

 Tools & Consumables	 Products	 Difficulty
<ul style="list-style-type: none">• Mechanical Mixer• Steel Trowel• Roller / Brush• Mist Sprayer	<ul style="list-style-type: none">• Glass Fibre Mesh (for flat objects)• CemForce (for curved / rounded objects)• BaseCoat Paste• Relevant Primer• Suitable decorative coating of choice• Sealer(s)• OPC (ordinary portland cement) - 42,5mPa	★ ★ ☆ ☆ ☆

The system:

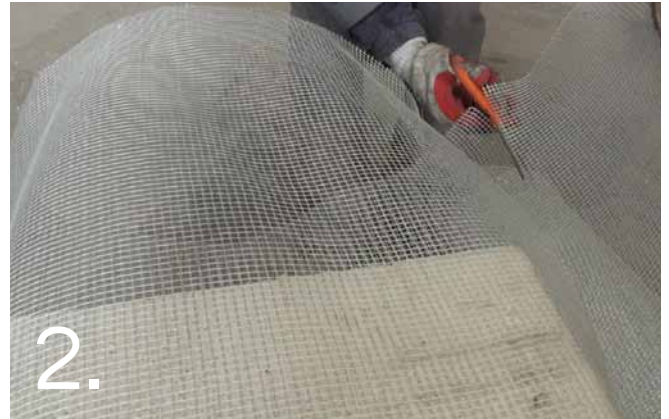


STEP-BY-STEP GUIDE

BaseCoat Paste over polystyrene



1. Measure and cut the polystyrene to the desired shape and size. Keep in mind that the finished object will turn out a little bigger due to the various preparation and finishing layers.



2. Cut the Glass Fibre Mesh to fit over the Polystyrene, allowing it to overlap as necessary. Keep aside.



3. Premix the BaseCoat paste with clean water at a ratio of 5:1.



4. While stirring the BaseCoat Paste continuously, slowly add cement at a ratio of 1:1. Small amount of water can be added to obtain desired consistency.



5. Leave mixture for 5 minutes before remixing and applying. Use all mixed material within 30 minutes. Half batches may be mixed for convenience. The addition of additives such as plasticizers, pigments, accelerators, etc is not recommended under any circumstance.



6. Apply BaseCoat Paste to a uniform thickness of about 2mm using a steel trowel. Immediately press the Glass Fibre Mesh into the wet BaseCoat Paste / cement mix.

STEP-BY-STEP GUIDE

BaseCoat Paste over polystyrene



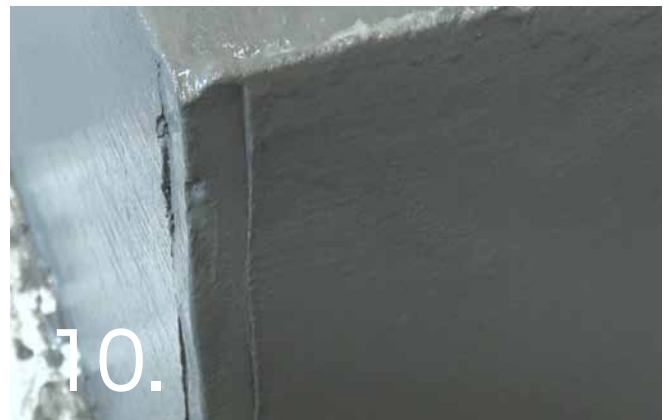
Keep the mesh firmly in place using industrial staples or pieces of thick U-shaped wire.



Add a final coat of BaseCoat Paste / cement mix to cover the mesh completely. Continue this process until all sides are coated with BaseCoat Paste / cement mix, Glass Fibre Mesh, secured with staples / wires, & finished with a final coat of BaseCoat Paste / cement mix.



While the final coat is still damp, lightly wet the surface and follow with a steel trowel to achieve a smooth final finish. Allow to dry completely. The base / one side may need to be completed separately.



Using an external corner tool, neaten the corners. Allow to dry completely. The base / one side may need to be completed separately.



Sand the object to remove any sharp or high spots using 120 grit Abrinet sand paper. Remove all dust leaving a clean smooth surface.



Follow the respective datasheet or step-by-step guide for your desired Concrete decorative finish and sealer(s).