

STEP-BY-STEP GUIDE

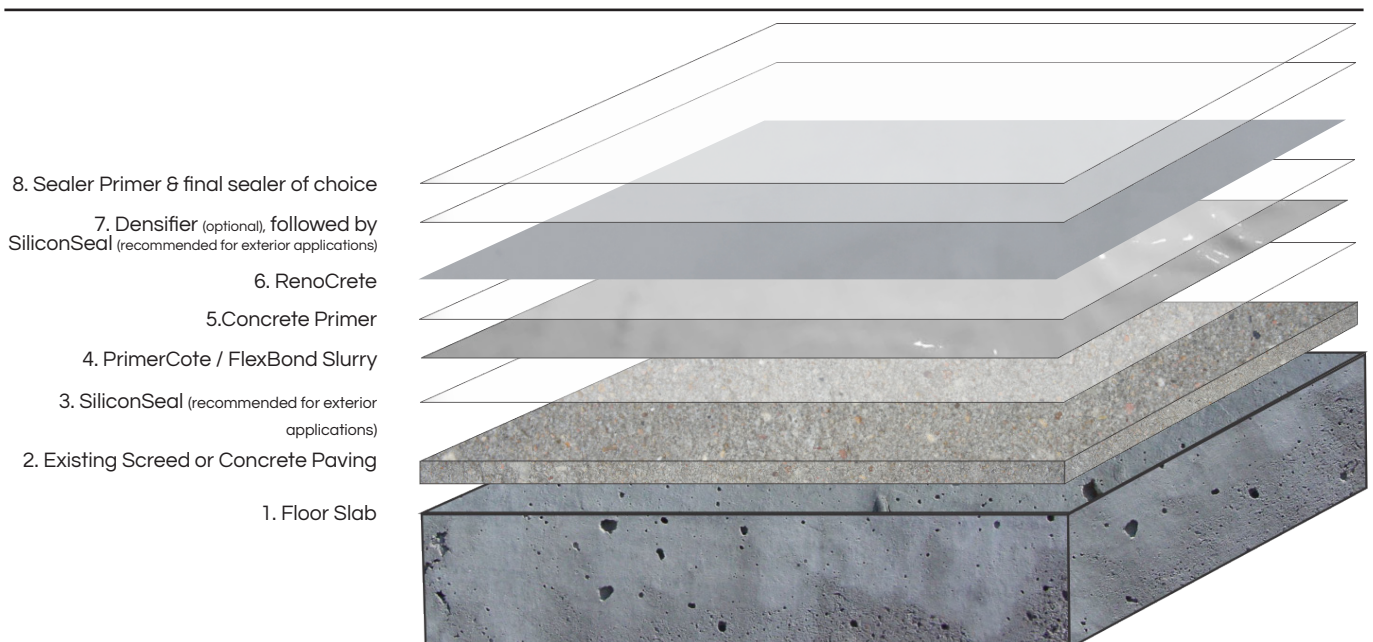
RenoCrete - Floor Application



What do you need:

🔧 Tools & Consumables	📋 Products	📈 Difficulty
<ul style="list-style-type: none"> • Broom / vacuum • Microfibre mop / sponge • Mechanical mixer • Hopper gun & compressor with 5mm nozzle (not required for smooth trowelled). • Sponge float (smooth trowelled finish) • Spike shoes • PVA roller (to seal knock down finish) • Mohair roller (to seal smooth trowelled & sprayed finish) • Paint brush • 300mm rounded steel trowel (only for knock down & smooth trowelled finishes) 	<ul style="list-style-type: none"> • PrimerCote • FlexBond • Concrete Primer • RenoCrete • Potassium Densifier (optional) • SiliconSeal (recommended for exterior applications) • Sealer Primer • Final sealer of choice 	<p style="text-align: center;">★ ★ ★ ★ ☆</p>

The system:



STEP-BY-STEP GUIDE

RenoCrete



1. Clean substrate with a broom or vacuum. The prepared substrate should be thoroughly dry before applying the RenoCrete system.

Warning: Do not apply over soft, chalky or dusty substrate.

Refer to the RenoCrete datasheet for the complete surface preparation.



2. Apply one coat of Cemcrete's PrimerCote to the concrete surface using block brush or similar tool (physically rub the PrimerCote into the surface). See relevant datasheet for correct application techniques. Let the PrimerCote dry overnight. The following day apply a single coat of Concrete Primer and when tacky apply the RenoCrete.



3. RenoCrete requires mixing with water only. See below for respective mixing ratios. RenoCrete must be mixed mechanically using an electric mortar mixer.



4. A standard hopper gun needs to be modified to spray vertically downwards. A 300mm plumbing wash-through combination elbow works well.



5. Before spraying, mask off any areas not to be coated for overspray up to a minimum of 1m in all directions. Pour mixed RenoCrete into a hopper gun connected to a suitable air compressor. Spray material in an even circular pattern ensuring complete coverage. Hold hopper gun no higher than 1m above the concrete surface.



Follow the finishing option that you want to create from this step.



STEP-BY-STEP GUIDE

RenoCrete (Sprayed Finish)

Page 3 of 5



Mechanically mix 3 parts RenoCrete to 1 part water.



Apply two to three spray coats – depending on desired thickness. Various nozzle sizes will give various textures. 5mm = finer texture; 8mm = coarser texture. If a smoother texture is required the final spray coat should be lightly steel trowelled, while still wet, so as to flatten any high points. Then continue with the curing and sealing process.

Curing instructions:

- In hot dry conditions cure completed work by mist spraying with water 3 times the following day.
- In light commercial applications it is recommended to densify the RenoCrete after 7 days using Cemcrete's Potassium Densifier prior to sealing.

Sealing instructions:

- The moisture in the substrate must be less than 5% prior to sealing.
- Apply one coat of Sealer Primer followed by 2 - 3 coats of sealer of choice, as per the relevant Datasheet(s). Seal only when moisture levels are below 5%.
- For exterior applications it is recommended to use SiliconSeal to reduce water absorption from below and above the decorative coating.
- Cemcrete manufacture a wide range of sealers designed for various purposes. Please contact your local representative for the best solution to meet your needs.

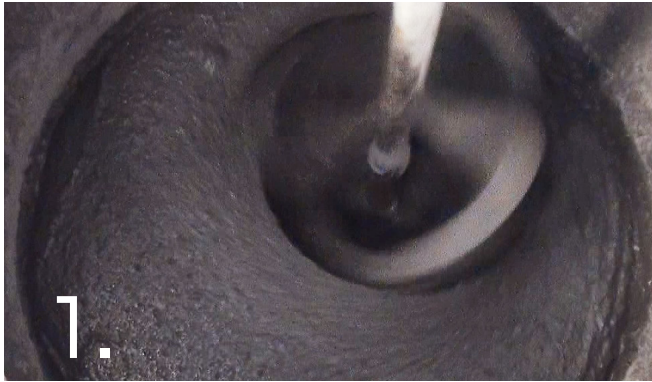


Manufacturers of Distinctive Decorative Coatings
0860 CEMCRETE | info@cemcrete.co.za | www.cemcrete.co.za

STEP-BY-STEP GUIDE

RenoCrete Knock Down Finish

Page 4 of 5



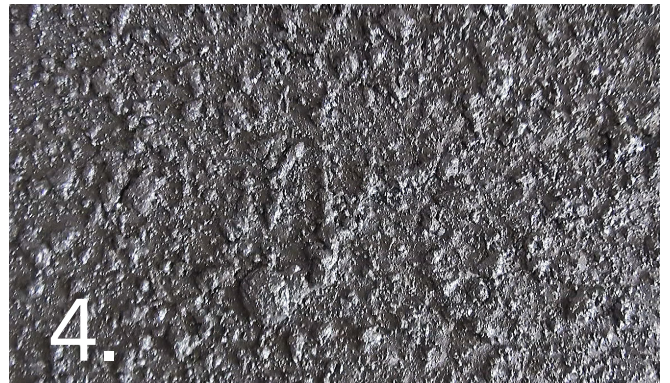
1. Mechanically mix 3 parts RenoCrete to 1 part water.



2. Spray apply the first coat with a 5mm hopper gun nozzle at a high pressure and allow to dry. Then dampen with water and apply the second coat as per first coat. Once completely dry, dampen with water again and use a mechanical blower or broom to clean off the area free of unbonded material and dust. Then use a coarse broom to remove any overspray.



3. Mechanically mix 3 parts RenoCrete to 1 part water.



4. For final coat, spatter spray apply with a very low air pressure (5mm / 8mm nozzle) and then "knock down" lightly with a 300mm steel trowel.



5. A team member in spiked shoes will follow the sprayer (during third coat) and...



6. ..."knock down" the sprayed mortar with a 300mm rounded steel trowel. Once completely dry, use a mechanical blower or broom to clean off the area free of un-bonded material and dust. Then use a coarse broom to remove any overspray. Then continue with the curing and sealing process.

Curing instructions:

- In hot dry conditions cure completed work by mist spraying with water 3 times the following day.
- In light commercial applications it is recommended to densify the RenoCrete after 7 days using Cemcrete's Potassium Densifier prior to sealing.

Sealing instructions:

- The moisture in the substrate must be less than 5% prior to sealing.
- Apply one coat of Sealer Primer followed by 2 - 3 coats of sealer of choice, as per the relevant Datasheet(s). Seal only when moisture levels are below 5%.
- For exterior applications it is recommended to use SiliconSeal to reduce water absorption from below and above the decorative coating.
- Cemcrete manufacture a wide range of sealers designed for various purposes. Please contact your local representative for the best solution to meet your needs.



Manufacturers of Distinctive Decorative Coatings

0860 CEMCRETE | info@cemcrete.co.za | www.cemcrete.co.za

STEP-BY-STEP GUIDE

RenoCrete Smooth Trowelled Finish

Page 5 of 5



Mix 4 parts RenoCrete with 1 part water.



Apply with a trowel forcing the product onto the surface. Final thickness not to exceed 3mm. Use a gauge to check thickness.



Allow RenoCrete to become firm, biscuit hard, then re-float with a wet sponge float to soften the surface. At this stage various textures can be achieved using various finishing tools, or just steel trowel smooth. Then continue with the curing and sealing process.

Curing instructions:

- In hot dry conditions cure completed work by mist spraying with water 3 times the following day.
- In light commercial applications it is recommended to densify the RenoCrete after 7 days using Cemcrete's Potassium Densifier prior to sealing.

Sealing instructions:

- The moisture in the substrate must be less than 5% prior to sealing.
- Apply one coat of Sealer Primer followed by 2 - 3 coats of sealer of choice, as per the relevant Datasheet(s). Seal only when moisture levels are below 5%.
- For exterior applications it is recommended to use SiliconSeal to reduce water absorption from below and above the decorative coating.
- Cemcrete manufacture a wide range of sealers designed for various purposes. Please contact your local representative for the best solution to meet your needs.



Manufacturers of Distinctive Decorative Coatings
0860 CEMCRETE | info@cemcrete.co.za | www.cemcrete.co.za