

A photograph of a decorative courtyard. In the foreground, a rectangular pond with dark water contains several white calla lilies. A small waterfall flows from a concrete ledge on the right side of the pond. The pond is surrounded by a concrete deck with several large terracotta pots containing various flowers. In the background, there are stone steps leading up to a stone building with arched windows. The overall scene is well-maintained and aesthetically pleasing.

**ICEMCRETE®**

Manufacturers of Distinctive Decorative Coatings

# WATERPROOFING PRODUCTS

---

Products for Waterproofing, Treatment of Damp & Pond Lining

# MATCRETE

Waterproof cement lining that can be applied directly onto hard compacted soil for the cost-effective creation of any water-containing structures such as fish ponds, water channels, dams, drinking troughs, relining of pipes, repair of old cracked reservoirs, flat roof waterproofing, parapet waterproofing etc.



## REINFORCED WATERPROOFING CEMENT LINING

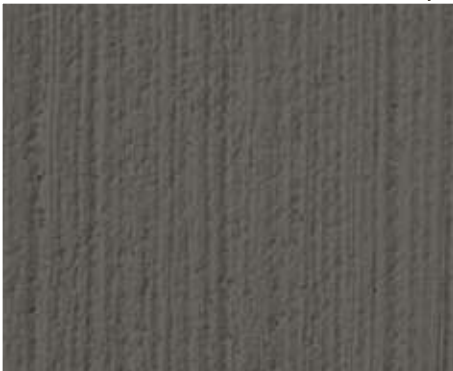
MatCrete Charcoal

The colours depicted are a guide only and Cemcrete recommends choosing colours from an actual on-site sample.

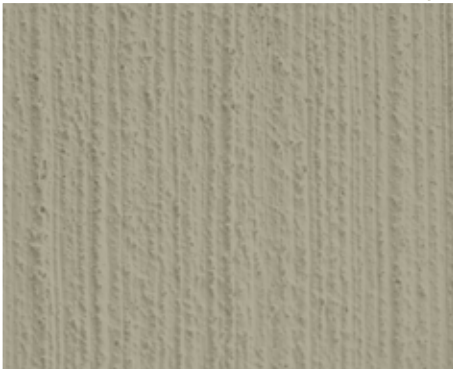


## BENEFITS

- Thin cement linings can be formed in-situ
- Can be reinforced with as many layers of CemForce as necessary for strength required
- Ready to use with the addition of FlexBond solution only
- Not only waterproof, but vapour proof as well
- Fish and plant friendly
- Cost-effective creation of water-containing structures
- Can be applied directly onto hard compacted soil



Charcoal



Grey



Brown

## SPECIFICATIONS

Suitable surfaces	Applied directly onto hard compacted soil, cement or concrete based water channels, dams, drinking troughs, reservoirs, flat roofs, parapets etc.
Finish	Rough textured Can be smooth trowelled
Thickness	2mm including the CemForce Max thickness of 8mm – add a layer of CemForce for every extra 2mm
Application	Brush-on
Packaging	40kg bags
Coverage	Approximately 6m <sup>2</sup> per 40kg bag
Curing	Allow finished work to air cure for 3 days before filling with water
Colour/s	Available in 3 colours

## INTENDED FOR USE WITH

FlexBond	1, 5 & 20 litres - Approximately 2 litres per 40kg bag of MatCrete (FlexBond to be diluted 1:4 with water)
CemForce	Woven polypropylene fibre – sold per m <sup>2</sup> (1m x any length; max 640m)
CemLam	Woven polypropylene fibre extrusion laminate - sold as 1.6m width by the meter (max 430m)

## TOOLS NEEDED

Block brush  
Steel trowel (optional)

## SUPPORTING CEMCRETE PRODUCTS

ElastoBond

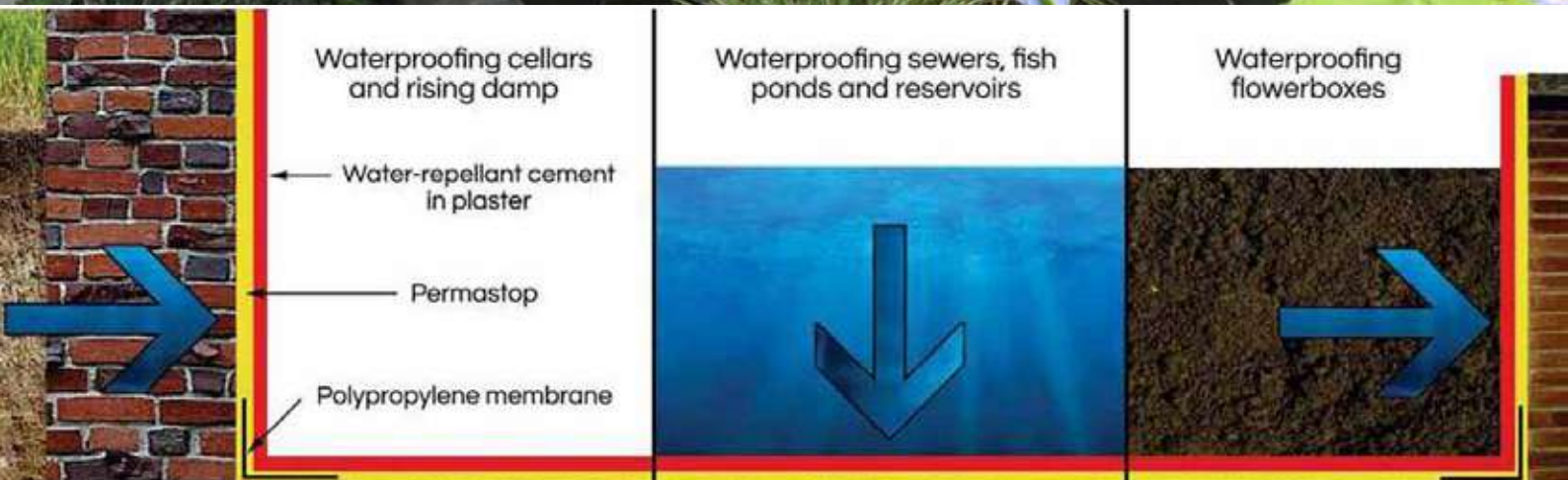
*Did you know*

Every layer of CemForce applied can withstand 1 meter of positive water pressure.

# PERMASTOP

A cement-based mixture containing chemicals which combine with the water in cement and migrate into the concrete or cement plaster thereby effectively waterproofing the structure against hydrostatic pressure. For slurry coatings and plugging holes. For solving most types of waterproofing problems in below-ground and water-containing structures that contain OPC.

## CRYSTALLINE WATERPROOFING TREATMENT





## BENEFITS

- Resists extreme hydrostatic pressure from both the positive and negative side of the substrate
- Resistant to aggressive chemicals i.e. oil, salt water, alkalis, certain chemicals, weak acids and aggressive sulphate soils
- Becomes an integral part of the substrate - deep penetration
- Self-mending when punctured or torn and is not subject to deterioration, it is therefore permanent
- Does not require protection when backfilling
- Can be applied to moist surfaces
- Can seal static hairline cracks
- Increases the strength of concrete by up to 30% dependent on quality of original concrete
- Waterproof but not vapour proof
- No VOC's
- Can seal gushing leaks in conjunction with Cemcrete's Permastop Accelerator

## SPECIFICATIONS

Suitable surfaces	Must be in contact with the cement/concrete to be effective
Finish	Brushed finish unless plaster is applied over it
Application	Brush-on
Packaging	1, 5 & 25kg containers
Coverage	Brush application: Approximately 1,3m <sup>2</sup> / kg / coat depending upon suction and texture of surface Joint filling: Depends on size of joint With polypropylene membrane - Approximately 3kg/ m <sup>2</sup>
Curing	In hot dry conditions cure completed work by dampening with clean water three times during the day following the day of application. Protect against freezing for 24 hours. Protect from direct sun and wind by covering with plastic or wet hessian for 24 hours
Colour/s	Grey - can supply white upon request

## INTENDED FOR USE WITH

Permastop Accelerator	1 & 5 litre containers
Polypropylene Membrane	Available in bulk or cut in 10m x 100mm strips

## TOOLS NEEDED

150mm Block brush  
Large distemper brush  
Soft broom

# ELASTOBOND

ElastoBond is a liquid polymer to be mixed with Cemcrete's MatCrete powder to create a tough, flexible, UV resistant waterproofing membrane. It is suitable for waterproofing shower recesses, external decks, planter boxes and flat roofs where there is light foot traffic.



## BENEFITS

- Excellent flexibility & crack bridging properties
- UV resistant

## SPECIFICATIONS

Suitable surfaces	Light trafficked rooftops, walkways and decks. In these areas occasional foot traffic is permitted Planter boxes, retaining walls and basements NOT subjected to rising damp Bathrooms, shower recesses, laundries, and all wet areas requiring a tiled finish Swimming pools and wading pools when covered with tiles or decorative toppings Water containment areas such as water features, ponds and fountains Roofs, walls and floors, over concrete, cement render, marine plywood, metal, pre-cleaned galvanized iron, fibre cement sheets and exterior grade plasterboard
Finish	Dependent on what it is mixed with
Application	Brush-on
Packaging	1, 5 & 20 litre containers
Coverage	Coverage is approximately 10m <sup>2</sup> per 20 litres of ElastoBond mixed with 20 litres MatCrete at 2 - 3mm cured film thickness This is also dependant on the amount & type of membrane used in the application
Curing	Usually within 24 - 36 hours, depending on humidity, ambient temperatures and surface porosity. The ElastoBond mixture dries by reaction between powder and liquid, moisture evaporation and absorption into the substrate, so allow longer for surfaces with low porosity Allow ElastoBond mixture to cure before subjecting the floor to light foot traffic (at least 24 hours) Do not use showers for at least 72 hours after application of ElastoBond mixture This ensures application is thoroughly cured
Colour/s	White liquid which dries clear

## INTENDED FOR USE WITH

MatCrete	Approximately 6m <sup>2</sup> per 40kg bag
Concrete Primer	1, 5 & 20 litre containers
PrimerCote	5kg containers
Polypropylene Membrane	200mm x 10m rolls
CemLam/CemForce	Textile reinforcement system

## TOOLS NEEDED

Block brush

# FLEXIBLE BONDING LIQUID

# WATER-REPELLENT CEMENT

## Ready-to-use Water-Repellent Cement

Use Water-Repellent Cement in place of Ordinary Portland Cement to overcome capillary absorption of moisture into cement mortar, cement plaster and concrete.

### BENEFITS

- Reducing moisture movement, crazing, efflorescence and moisture penetration
- Reducing rising damp in brickwork when used in mortar

### SPECIFICATIONS

Suitable surfaces	Suitable for reducing permeability in concrete tanks, reservoirs, sewerage works, cellars, basement walls and floors, garage pits, walls and precast stone
Finish	Will not change the finish of the cement mix
Application	Ready to use waterproof cement
Packaging	50kg bags
Coverage	Dependent on the mix
Curing	In hot dry conditions cure completed work by damping down with water or protecting with wet sacks or plastic sheeting
Colour/s	Grey

# CEMENT WATERPROOFING COMPOUND

## Water-repellent cement additive

A water-repellent powder for adding to cement to overcome capillary absorption of moisture into cement mortar, cement plaster and concrete.

### BENEFITS

- For preventing loss of water from water containing structures
- For reducing moisture movement, crazing, efflorescence and moisture penetration
- For reducing rising damp in brickwork when used in the mortar

### SPECIFICATIONS

Suitable surfaces	Suitable for reducing permeability in concrete tanks, reservoirs, sewerage works, cellars, basement walls and floors, garage pits, walls and precast stone. Interior & exterior wall surfaces, including polystyrene and certain foams or such
Finish	Will not change the finish of the cement mix
Application	Mixed with Portland cement in powder form
Packaging	1 & 25kg containers
Coverage	2% of the weight of the cement to be used in the mix which is equal to 1kg per 50kg cement
Curing	In hot dry conditions cure completed work by damping down with water or protecting with wet sacks or plastic sheeting
Colour/s	Grey