

STEP-BY-STEP GUIDE

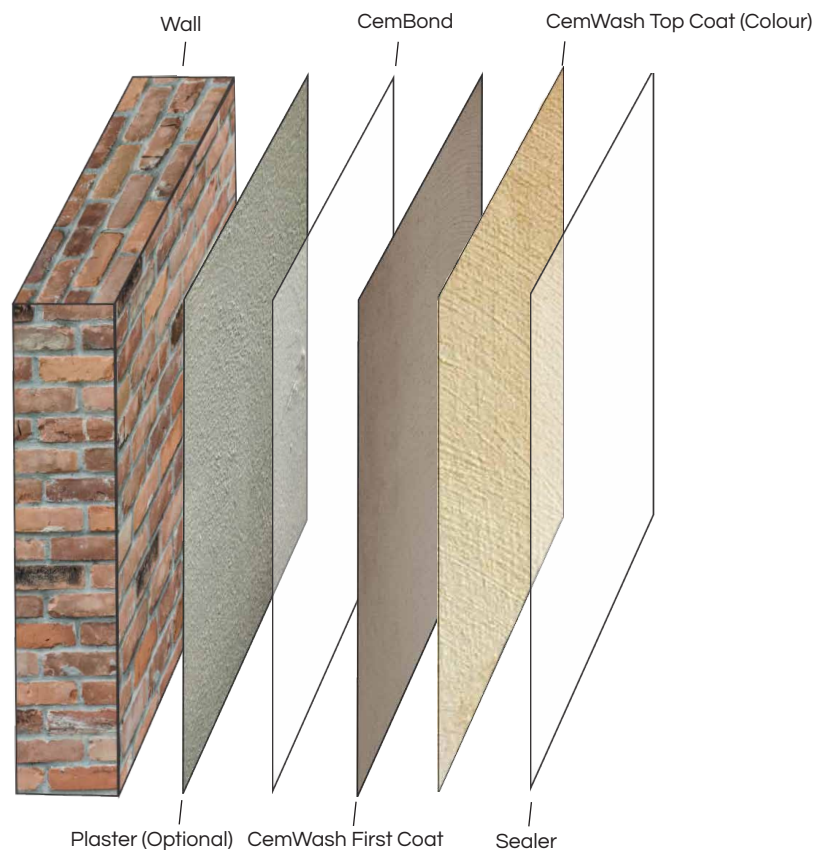
CemWash



What do you need:

🔧 Tools & Consumables	📄 Products	🔧 Difficulty
<ul style="list-style-type: none">• Mechanical mixer• Block brush or broom or hopper gun• Mist sprayer	<ul style="list-style-type: none">• CemBond• CemWash first coat (grey)• CemWash top coat (colour)• Sealer (optional)	★ ★ ★ ☆ ☆

The system:



Manufacturers of Distinctive Decorative Coatings
0860 CEMCRETE | info@cemcrete.co.za | www.cemcrete.co.za

STEP-BY-STEP GUIDE

CemWash onto plaster



1. The plaster should be cured for at least 28 days before applying CemWash. Prime the plaster with a solution made up of 1 part CemBond and 3 parts water allowing each coat to dry properly between coats.



2. Mix to a paste 3 volumes CemWash first coat (grey) with 1 volume solution made up using 1 volume CemBond and 5 volumes water. Add 1 further volume of the solution and mix to a creamy slurry. Apply all mixed material within 30 minutes. Keep mixture stirred to ensure consistent texture.



3. Apply CemWash first coat grey using a block brush. Clean splashes and over-coating at the end of each day. Cure by wetting with clean water 3 times during the next day. Leave to dry.



4. Mix to a paste 3 volumes CemWash top coat (colour) with 1 volume water. Add 1 further volume of water and mix to a creamy slurry. Apply all mixed material within 30 minutes. Keep mixture stirred to ensure consistent texture.



5. Remember to keep a wet edge at all times & work from architectural feature to architectural feature or corner to corner in order to prevent unsightly joint marks. Do not come back to patch. It is advisable to use at least 2 applicators per wall, one above & one below, following closely behind to avoid dry joints.



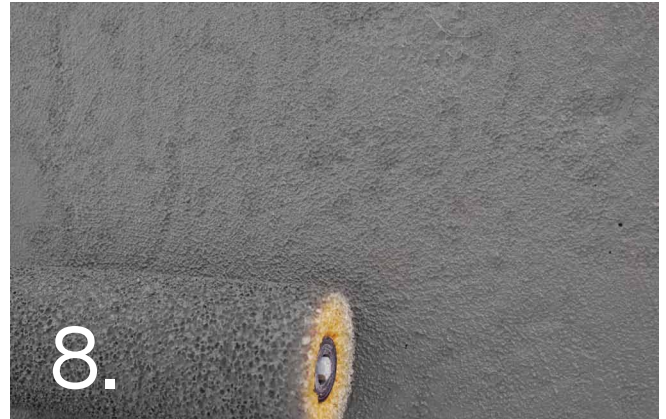
6. Optional: If a brushed effect is desired, finish with vertical down-strokes, using a long handled broom and ensuring one continuous stroke from the top of the wall to the bottom. The fineness of the broom bristles and pressure exerted on the wall will determine the texture obtained.

STEP-BY-STEP GUIDE

CemWash onto plaster



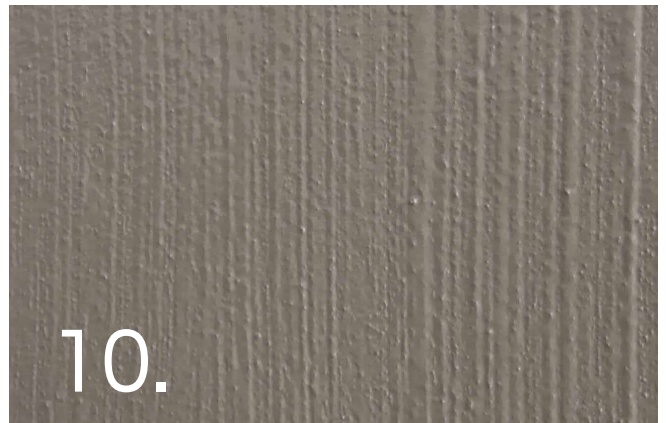
7. Optional: Apply the CemWash (Colour) at a 90° angle to the CemWash first coat grey. This will produce a "heassian" affect.



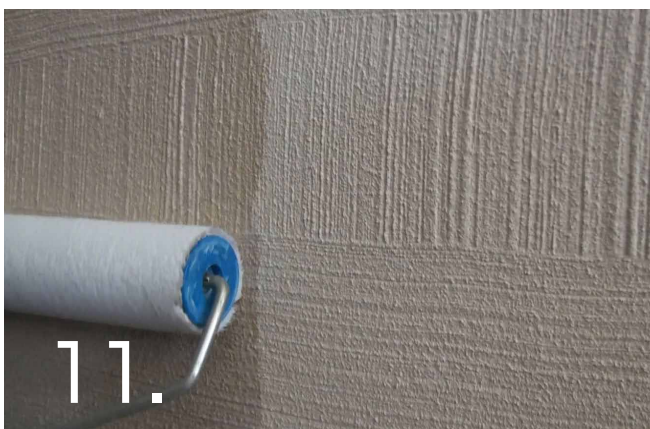
8. Optional: Finish the final CemWash coat using a damp sponge-roller to create desired texture.



9. Optional: Finish the final CemWash coat using a damp sponge to create desired texture.



10. Each coat to be cured by wetting with clean water 3 times during the day following the day of application. Cure from bottom to top in order to avoid water run marks and colour variations.



11. Optional: Where a high level of dirt retention is expected we recommend the use of a sealer. The moisture in the substrate must be less than 5% prior to sealing.

Important information:

- Spray Application - CemWash can be spray applied using a hopper gun (3mm nozzle setting) and a compressor with a minimum capacity of 120lt. Mix CemWash first coat (grey) as per step 2 & CemWash top coat (colour) as per step 3.
- Surfaces with variable suction (where plaster with newly patched sections & previously painted surfaces exist on the same wall or are butt joined), apply a 3 - 4mm layer of Cemcrete's EIFS BaseCoat (in accordance with the datasheet). Finish the surface using a block brush or sponge roller to create a textured finish, thus providing a good mechanical key. Leave to dry for at least 24 hours.
- Shuttered concrete - shuttered concrete should be shot blasted so as to provide a good mechanical key & remove all traces of release agents before attempting to coat with CemWash. A trial area should be done to test for proper adhesion before commencing with the project. Having achieved this follow the same procedure as for plastered surfaces.

STEP-BY-STEP GUIDE

CemWash onto flush-jointed brick or block-work



1. Remove high spots by rubbing a brick over the surface in a circular motion.



2. Remove all dust and loose material.



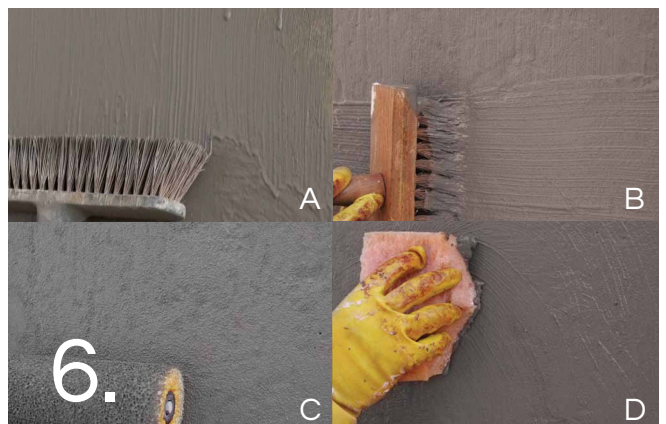
3. Prepare a paste comprising 3 volumes of CemWash and 1 volume water. Fill large holes using this paste. Leave to dry for 1 day. Cure by wetting with water 3 times during the next day.



4. Mix 3 volumes of CemWash first coat grey with 1 volume of clean water. Mix to a paste, then add further volume of water. Mix to a creamy slurry. Apply with a block brush. Clean splashes and over-brushing at the end of each day. Cure by wetting with clean water 3 times during the next day. Leave to dry.



5. Mix the CemWash Colour coat in the same manner as the CemWash first coat grey. Apply with a block brush. Cure by wetting with clean water 3 times the next day from the bottom upwards. Leave to dry. Where a high level of dirt retention is expected we recommend the use of a sealer. The moisture in the substrate must be less than 5% prior to sealing.



6. A | Finish final coat with vertical down-strokes, using a long handled broom. B | Apply final coat at a 90° angle to create a "heassian" affect. C | Finish the final coat using a damp sponge-roller to create desired texture. D | Finish the final coat using a damp sponge to create desired texture.

CEMCRETE[®]

Manufacturers of Distinctive Decorative Coatings
0860 CEMCRETE | info@cemcrete.co.za | www.cemcrete.co.za

STEP-BY-STEP GUIDE

CemWash onto scratch plaster



Remove all dust and loose material by brushing well.



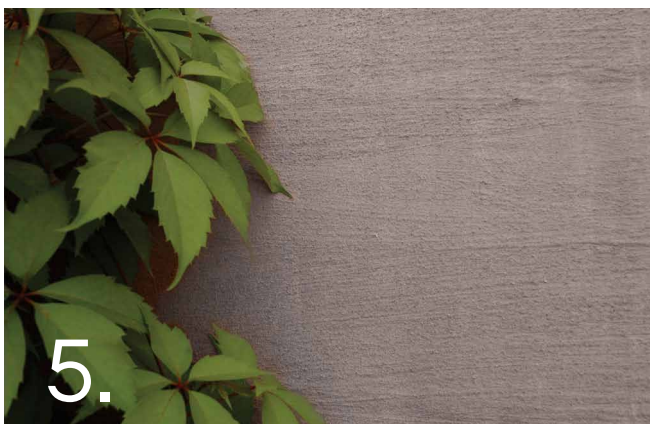
Combine 1 volume of CemBond with 5 volumes of clean water. Use this Mixing Liquid to prime the surface. Leave until the surface is tacky (usually about 10 minutes).



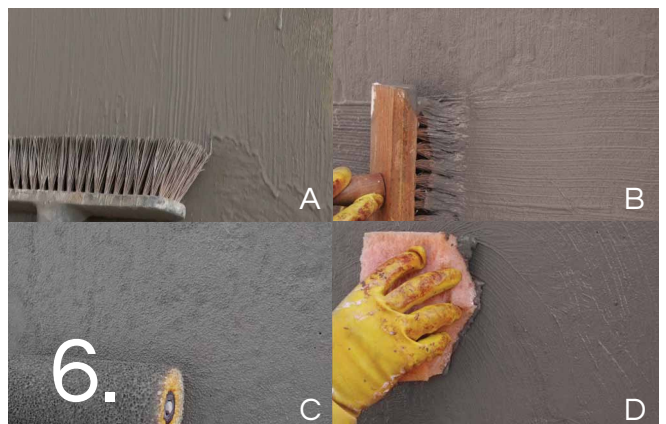
In a suitable container combine 3 volumes CemWash first coat grey with 1 volume of the Mixing Liquid. Mix to a paste. Add 1 further volume of the Mixing Liquid. Mix to a creamy slurry.



Apply the CemWash first coat grey using a block brush. Clean slashes or over-brushing at the end of each day. Cure by wetting with clean water 3 times during the next day. Leave to dry.



Mix and apply CemWash (Colour) in the same manner as the CemWash first coat grey with the Mixing Liquid. Cure by wetting with clean water 3 times during the next day from the bottom upwards. Where a high level of dirt retention is expected we recommend the use of a sealer. The moisture in the substrate must be less than 5% prior to sealing.



A | Finish final coat with vertical down-strokes, using a long handled broom.
B | Apply final coat at a 90° angle to create a "heassian" affect.
C | Finish the final coat using a damp sponge-roller to create desired texture.
D | Finish the final coat using a damp sponge to create desired texture.

STEP-BY-STEP GUIDE

CemWash onto previously painted surfaces



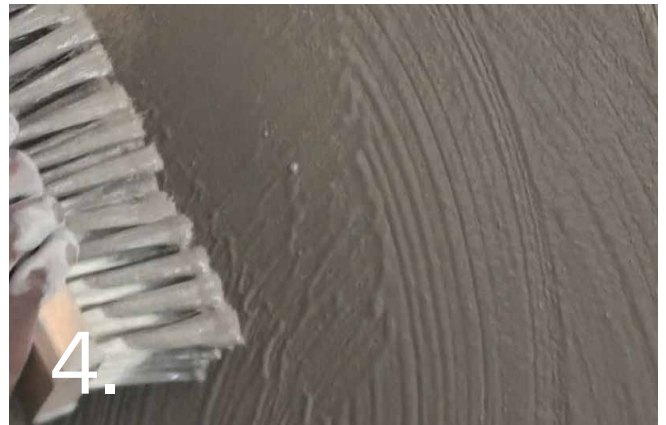
1. Using a 60 grit sand paper (mechanical sanding or grinding if necessary), sand the surface horizontally to create a mechanical key and to remove all defective and loose material. Remove all dust and loose material by brushing well. Wipe the surface using a damp sponge.



2. Combine 1 volume of CemBond with 5 volumes of clean water. Use this Mixing Liquid to prime the surface. Leave until the surface is tacky (usually about 10 minutes).



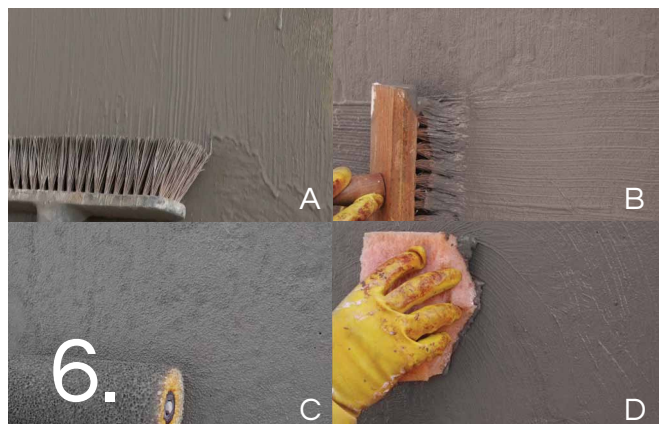
3. In a suitable container combine 3 volumes CemWash first coat grey with 1 volume of the Mixing Liquid. Mix to a paste. Add 1 further volume of the Mixing Liquid. Mix to a creamy slurry.



4. Apply the CemWash first coat grey using a block brush. Clean slashes or over-brushing at the end of each day. Cure by wetting with clean water 3 times during the next day. Leave to dry.



5. Mix & apply CemWash (Colour) in the same manner as the first coat grey. Cure by wetting with clean water 3 times during the next day from the bottom upwards. See various finishing options on page 2 & 3 of this guide; steps 6-9. Where a high level of dirt retention is expected we recommend the use of a sealer. The moisture in the substrate must be less than 5% prior to sealing.



6. A | Finish final coat with vertical down-strokes, using a long handled broom.
B | Apply final coat at a 90° angle to create a "heassian" affect.
C | Finish the final coat using a damp sponge-roller to create desired texture.
D | Finish the final coat using a damp sponge to create desired texture.